



Country Gold Wintercreeper
Euonymus fortunei 'Country Gold'

Height: 4 feet

Spread: 5 feet

Sunlight: ○ ● ●

Hardiness Zone: 5a

Other Names: Wintercreeper Euonymus

Description:

A spectacular mounded garden shrub featuring dark green evergreen leaves with prominent golden yellow margins, very colorful all season long; a versatile and adaptable color accent for a wide variety of landscape applications

Ornamental Features

Country Gold Wintercreeper has attractive green foliage edged in gold on a plant with a round habit of growth. The glossy oval leaves are highly ornamental and remain green throughout the winter. It produces pink capsules from mid to late fall.

Landscape Attributes

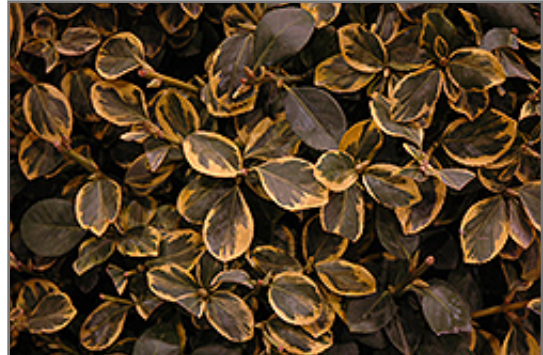
Country Gold Wintercreeper is a multi-stemmed evergreen shrub with a more or less rounded form. Its relatively fine texture sets it apart from other landscape plants with less refined foliage.

This shrub will require occasional maintenance and upkeep, and can be pruned at anytime. Gardeners should be aware of the following characteristic(s) that may warrant special consideration;

- Insects

Country Gold Wintercreeper is recommended for the following landscape applications;

- Mass Planting
- Hedges/Screening
- General Garden Use
- Groundcover



Country Gold Wintercreeper foliage
Photo courtesy of NetPS Plant Finder



Country Gold Wintercreeper
Photo courtesy of NetPS Plant Finder



Planting & Growing

Country Gold Wintercreeper will grow to be about 4 feet tall at maturity, with a spread of 5 feet. It tends to fill out right to the ground and therefore doesn't necessarily require facer plants in front. It grows at a fast rate, and under ideal conditions can be expected to live for approximately 30 years.

This shrub performs well in both full sun and full shade. It is very adaptable to both dry and moist locations, and should do just fine under average home landscape conditions. It is not particular as to soil type or pH. It is highly tolerant of urban pollution and will even thrive in inner city environments, and will benefit from being planted in a relatively sheltered location. This is a selected variety of a species not originally from North America.